

# m-3DP

New Enhancements for 2025

Released Date: 06.25.2024

Application(s): IRONCAD, INOVATE

Introducing our latest product update, packed with exciting new features and enhancements designed to elevate your experience. We've listened to your feedback and have incorporated improvements that streamline functionality, boost efficiency, and enhance usability. From enhanced user interfaces to advanced customization options, this update is tailored to empower you in achieving your goals more effectively. Join us as we unveil a new chapter of innovation, delivering a product that's more intuitive, powerful, and versatile than ever before.

## Contents

Contents.....	1
General Announcements.....	1
New Enhancements.....	1
Mag-Libs (Updated).....	1
Mag-Libs Shop.....	1
INOVATE .....	2
CAD Software .....	2

## General Announcements...

- Updated some icons

## New Enhancements...

### Mag-Libs (Updated)

Magna-Catalogs are now called "Mag-Libs" (short for Libraries). So you updated the icon.



### Mag-Libs Shop

This new shop link is for Non-Magnacad customers or expired Magnacad customers not on an active IronCAD support plan, and wish to purchase Mag-Libs as needed.



## INOVATE

3D CAD software designed for makers and hobbyists to 3d design with the greatest of ease and the most power with drag and drop technologies.



INOVATE

## CAD Software

This new shop link to our current CAD software offerings to help your 3D printing experience.



CAD Software

# m-ANATOMY

New Enhancements for 2025

Released Date: 06.25.2024

Version: 2025

Application(s): IRONCAD, INOVATE

Introducing our latest product update, packed with exciting new features and enhancements designed to elevate your experience. We've listened to your feedback and have incorporated improvements that streamline functionality, boost efficiency, and enhance usability. From enhanced user interfaces to advanced customization options, this update is tailored to empower you in achieving your goals more effectively. Join us as we unveil a new chapter of innovation, delivering a product that's more intuitive, powerful, and versatile than ever before.

## Contents

Contents .....	1
New Enhancements... .....	1
WOMAN BUST w Sweater .....	1

## New Enhancements...

### WOMAN BUST w Sweater

Womans bust with a garment added.



WOMAN BUST  
w Sweater

### Body Outline

Simple profile of upper body outline. Great for technically illustrations.



Body Outline

# m-ANIMALS

New Enhancements for 2025

Released Date: 06.25.2024

Version: 2025

Application(s): IRONCAD, INOVATE

Introducing our latest product update, packed with exciting new features and enhancements designed to elevate your experience. We've listened to your feedback and have incorporated improvements that streamline functionality, boost efficiency, and enhance usability. From enhanced user interfaces to advanced customization options, this update is tailored to empower you in achieving your goals more effectively. Join us as we unveil a new chapter of innovation, delivering a product that's more intuitive, powerful, and versatile than ever before.

## Contents

Contents.....	1
General Announcements.....	1
New Enhancements.....	1
BREP; T-Rex.....	1
Goose Profile.....	1
Various Insects .....	2

## General Announcements...

- Changed name Bear001 to Bear Profile

## New Enhancements...

### BREP; T-Rex

A BREP model of a T-Rex dinosaur with proper UV map included.



BREP



T-Rex

### Goose Profile

Shape extracted from Grey Goose bottle art.



Goose Profile

## Various Insects

a collection of common bugs used in jewelry quite often.



Bee



Butterfly



Butterfly(2)



Dragonfly



Dragonfly(2)



Ladybug

# m-CASTERS

New Enhancements for 2025

Released Date: 11.15.2054

Version: 2025

Application(s): IRONCAD, INOVATE

Introducing our latest product update, packed with exciting new features and enhancements designed to elevate your experience. We've listened to your feedback and have incorporated improvements that streamline functionality, boost efficiency, and enhance usability. From enhanced user interfaces to advanced customization options, this update is tailored to empower you in achieving your goals more effectively. Join us as we unveil a new chapter of innovation, delivering a product that's more intuitive, powerful, and versatile than ever before.

## Contents

Contents.....	1
New Enhancements... ..	1
Mini Caster.....	1
Wooden Wheel.....	1
Metal Wheel.....	1

## New Enhancements...

### Mini Caster

IronCAD model to represent a standard mini rolling swivel caster.



Mini Caster

### Wooden Wheel

2-Piece wooden rims with rubber tire



Wooden Wheel

### Metal Wheel

Welded metal wheel



Metal Wheel

# m-CLOTHES

New Enhancements for 2025

Released Date: 06.25.2024

Version: 2025

Application(s): IRONCAD, INOVATE

Introducing our latest product update, packed with exciting new features and enhancements designed to elevate your experience. We've listened to your feedback and have incorporated improvements that streamline functionality, boost efficiency, and enhance usability. From enhanced user interfaces to advanced customization options, this update is tailored to empower you in achieving your goals more effectively. Join us as we unveil a new chapter of innovation, delivering a product that's more intuitive, powerful, and versatile than ever before.

## Contents

Contents.....	1
New Enhancements.....	1
Sweater .....	1
Apparel items.....	1
Footwear .....	2
Female Bust with Sweater.....	2

## New Enhancements...

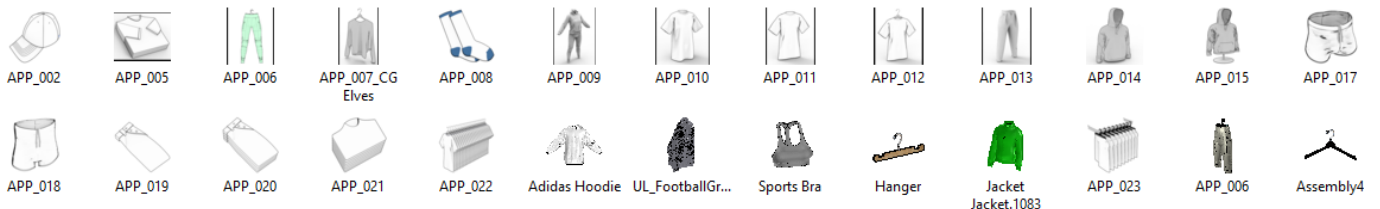
### Sweater

BREP model of a sweater. Additional UV map textures are located in the ...MagCLOTHES\MagCLOTHES bin\Textures\Sweater folder.



### Apparel items.

A sample of common clothing found in retail stores.



# Footwear

New sub-group of various types of footwear. Mostly BREP data.



## Footwear



# Female Bust with Sweater

Womans bust with a garment added.



## Female Bust with Sweater



# m-COLLECTION

New Enhancements for 2025

Released Date: 06.25.2024

Version: 2025

Application(s): IRONCAD, INOVATE

Introducing our latest product update, packed with exciting new features and enhancements designed to elevate your experience. We've listened to your feedback and have incorporated improvements that streamline functionality, boost efficiency, and enhance usability. From enhanced user interfaces to advanced customization options, this update is tailored to empower you in achieving your goals more effectively. Join us as we unveil a new chapter of innovation, delivering a product that's more intuitive, powerful, and versatile than ever before.

## Contents

Contents.....	1
General Announcements.....	1
New Enhancements.....	1
Gift Card Rack.....	1

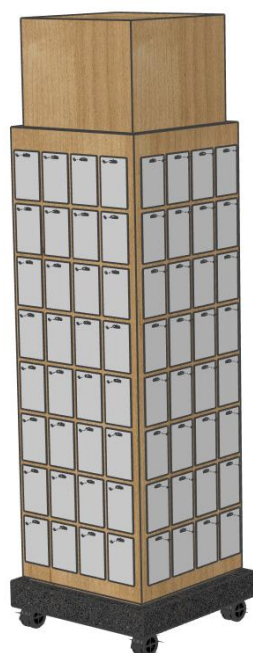
## General Announcements...

- Adjusted and relocated Anchors on some items that make more sense.

## New Enhancements...

### Gift Card Rack

Basic common rolling Gift Card display



Gift Card Rack

# m-COMPS

New Enhancements for 2025

Released Date: 06.25.2024

Version: 2025

Application(s): IRONCAD, INOVATE

Introducing our latest product update, packed with exciting new features and enhancements designed to elevate your experience. We've listened to your feedback and have incorporated improvements that streamline functionality, boost efficiency, and enhance usability. From enhanced user interfaces to advanced customization options, this update is tailored to empower you in achieving your goals more effectively. Join us as we unveil a new chapter of innovation, delivering a product that's more intuitive, powerful, and versatile than ever before.

## Contents

Contents.....	1
General Announcements.....	1
New Enhancements.....	1
Curb.....	2
Basket.....	2
Various Spigots.....	2
Suction Cup Basket.....	2
Suction Cup Basket Short.....	2
Suction Cup Brochure Holder.....	3
Bucket.....	3
Crate_Stackable.....	3
Crate with Signs.....	4
Hollywood Stand.....	4
Door Lock.....	4
SheetMetal Box.....	4

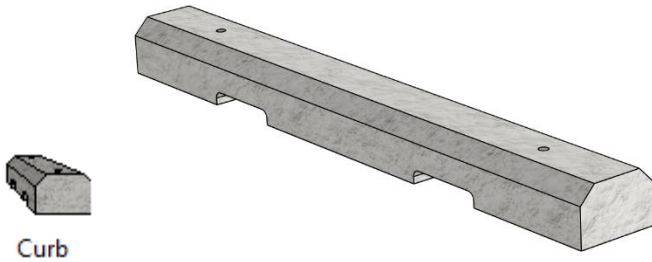
## General Announcements...

- Added missing textures to many components.
- Added Styrofoam and rope textures to the Life Preserver and the Buoy in the Nautical sub-group.

## New Enhancements...

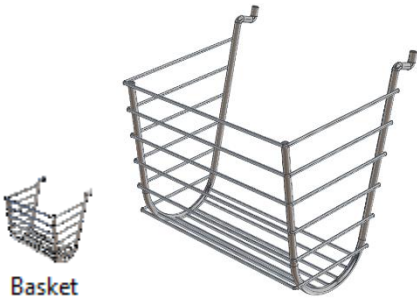
## Curb

Model of a concrete curb.



## Basket

Model of wire basket that's common hung off the side of existing merchandisers.



## Various Spigots

A collection of common conceptual use spigots.



## Suction Cup Basket

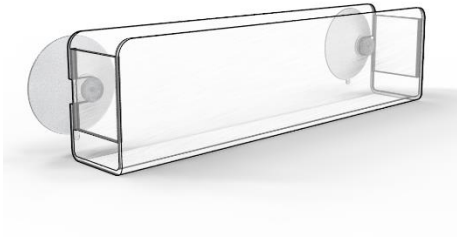
A common merchandising coupon basket with suction cups.



## Suction Cup Basket Short

A common merchandising coupon basket with suction cups.

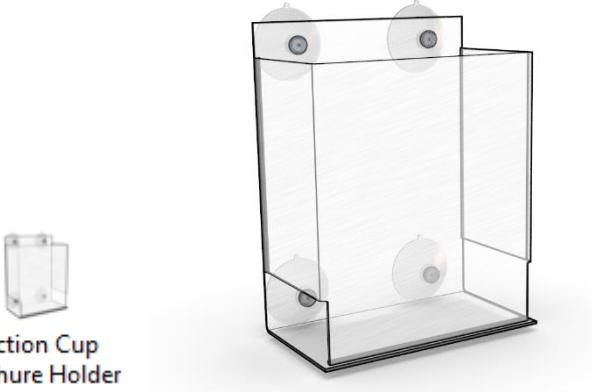
Suction Cup Basket Short



## Suction Cup Brochure Holder

A common merchandising coupon basket with suction cups.

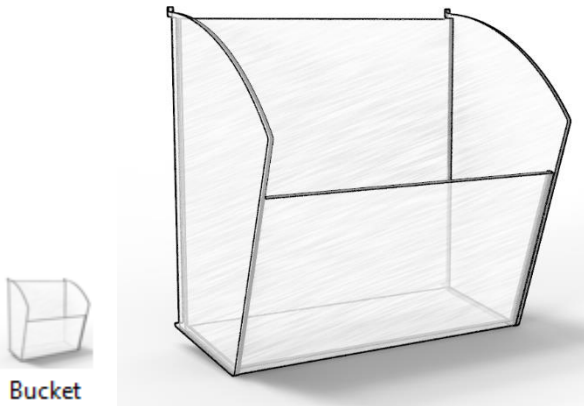
Suction Cup Brochure Holder



## Bucket

A common merchandising acrylic side hanging bucket

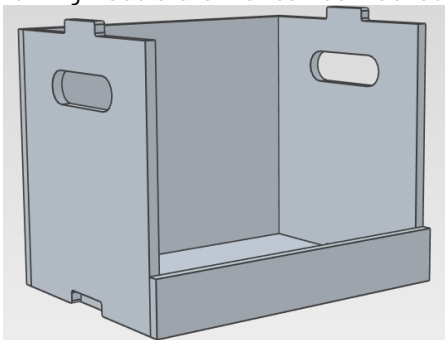
Bucket



## Crate\_Stackable

A common merchandising wood crate that can be stacked.

Crate\_Stackable

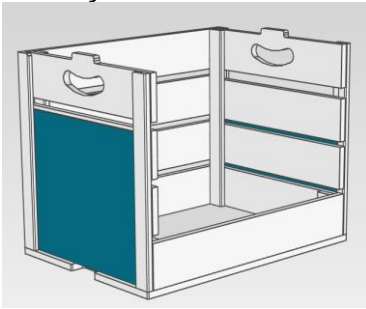


## Crate with Signs

A common merchandising wood crate that can be stacked. Also, for signs on each side.



Crate with Signs



## Hollywood Stand

A common merchandising cardboard tube and metal legs used for pole toppers and more common signage.



Hollywood Stand

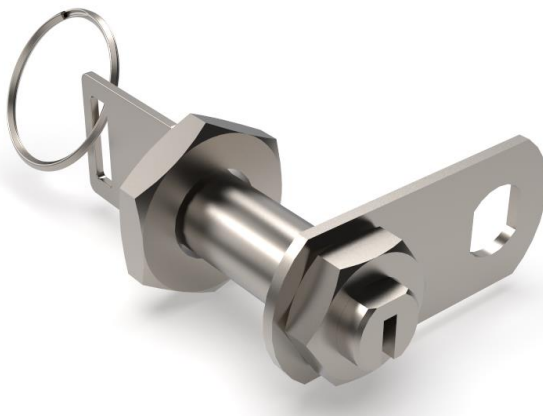


## Door Lock

A common merchandising lock used for lock boxes on displays or any other smaller items. Also includes the key and ring.



Door Lock



## SheetMetal Box

A rectangular sheet metal box and lid that is riveted together. Has handle and latch included.



SheetMetal Box



# m-CORRUGATE

New Enhancements for 2025

Released Date: 06.25.2024

Version: 2025

Application(s): IRONCAD, INOVATE

Introducing our latest product update, packed with exciting new features and enhancements designed to elevate your experience. We've listened to your feedback and have incorporated improvements that streamline functionality, boost efficiency, and enhance usability. From enhanced user interfaces to advanced customization options, this update is tailored to empower you in achieving your goals more effectively. Join us as we unveil a new chapter of innovation, delivering a product that's more intuitive, powerful, and versatile than ever before.

## Contents

Contents.....	1
New Enhancements... ..	1
X132 Cocktail Table - Plus.....	1
2 Case Merchandise Bin.....	1
Cardboard Barrel.....	2
Edge Protector.....	2
Hanger Notch.....	2
E-Z "U" Hook with PostScrew.....	2
Cardboard Box Hang Clip.....	2

## New Enhancements...

### X132 Cocktail Table - Plus

A cardboard cocktail table made up of 3 pieces using the "XANITA-FURNITURE-X132 Cocktail Table - Plus.dxf" template.



X132 Cocktail  
Table - Plus

### 2 Case Merchandise Bin

A common cardboard case bin for 2 case high items. Unfold able pattern using Sheetmetal option.



2 Case  
Merchandi...

## Cardboard Barrel

Half of a whiskey barrel made from 3 piece corrugate.



Cardboard Barrel

## Edge Protector

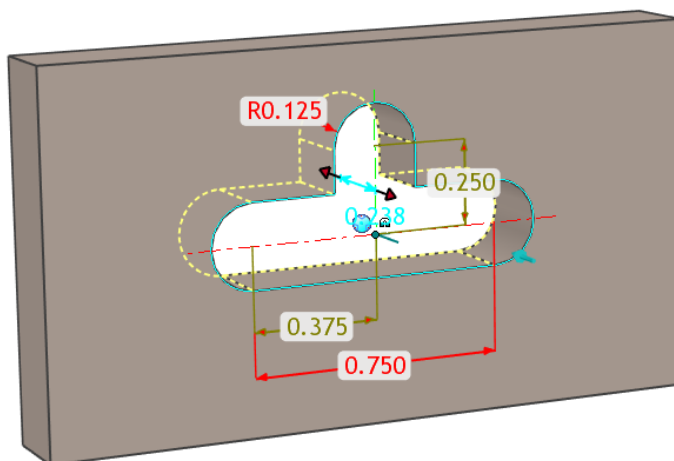
A common extruded plastic to protect edges thin parts.



Edge Protector

## Hanger Notch

A subtractive feature of a common punch shape used on packaged items to hang on a peg. This is a direct dimension driven Intellishape. So, edit the profile dimensions to update as required. This can be used on solid models as well as sheet metal models.



Hanger Notch

## E-Z "U" Hook with PostScrew

Fastener to hang items.



Hardware

E-Z "U" Hook with PostScrew

## Cardboard Box Hang Clip

Fastener to hang cardboard shelves etc.



Cardboard Box Hang Clip



# m-ELECT

New Enhancements for 2025

Released Date: 06.25.2024

Version: 2025

Application(s): IRONCAD, INOVATE

Introducing our latest product update, packed with exciting new features and enhancements designed to elevate your experience. We've listened to your feedback and have incorporated improvements that streamline functionality, boost efficiency, and enhance usability. From enhanced user interfaces to advanced customization options, this update is tailored to empower you in achieving your goals more effectively. Join us as we unveil a new chapter of innovation, delivering a product that's more intuitive, powerful, and versatile than ever before.

## Contents

Contents.....	1
New Enhancements... ..	1
DC Power Supply for LED 30 W .....	1
LED_6 .....	1
LED_Single.....	2
Lit Sub Assy.....	2
WebCam.....	2
Wire Duct_T1E-1030G.....	2
LENOVO Thinkstation P310 .....	2
DELL Optiplex 9020 .....	3

## New Enhancements...

### DC Power Supply for LED 30 W

webhook to supplier page.



DC Power  
Supply for L...

### LED\_6

LED board with 6 LED emitters on it. Webhook to supplier page.



LED\_6

## LED\_Single

LED board with 1 LED emitters on it. Webhook to supplier page.



LED\_Single

## Lit Sub Assy

LED Assembly with plexiglass and frame



Lit Sub Assy

## WebCam

Older webcam style



WebCam

## Wire Duct\_T1E-1030G

Wire Duct Assembly with complete editability. Web hooks to supplier site.



Wire  
Duct\_T1E-1030G

## LENOVO Thinkstation P310

An older version of the iconic computer.



LENOVO  
Thinkstati...

# DELL Optiplex 9020

An older version of the iconic computer.



DELL Optiplex  
9020



# m-ESTIMATOR

New Enhancements for 2025

Released Date: 06.25.2024

Version: 2025

Application(s): IRONCAD, INOVATE

Introducing our latest product update, packed with exciting new features and enhancements designed to elevate your experience. We've listened to your feedback and have incorporated improvements that streamline functionality, boost efficiency, and enhance usability. From enhanced user interfaces to advanced customization options, this update is tailored to empower you in achieving your goals more effectively. Join us as we unveil a new chapter of innovation, delivering a product that's more intuitive, powerful, and versatile than ever before.

## Contents

Contents.....	1
General Announcements... ..	1

## General Announcements...

- Removed JRIV-XTENDA
- Updated Magna-Catalogs
- Updated the pricing on effected products due to the price increases for 2024.
- Removed the JRIV-XTENDA option as per new policies implemented.
- Updated some icons

# m-FOOD

New Enhancements for 2025

Released Date: 06.25.2024

Version: 2025

Application(s): IRONCAD, INOVATE

Introducing our latest product update, packed with exciting new features and enhancements designed to elevate your experience. We've listened to your feedback and have incorporated improvements that streamline functionality, boost efficiency, and enhance usability. From enhanced user interfaces to advanced customization options, this update is tailored to empower you in achieving your goals more effectively. Join us as we unveil a new chapter of innovation, delivering a product that's more intuitive, powerful, and versatile than ever before.

## Contents

Contents.....	1
General Announcements.....	1
New Enhancements.....	1
Donut .....	1
Water Bottle w Necker .....	2

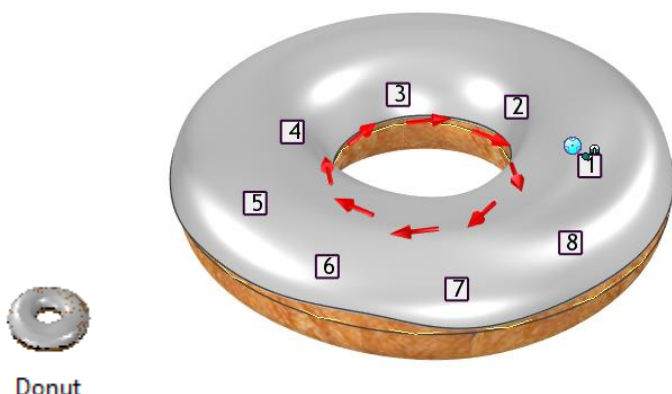
## General Announcements...

- Updated some icons

## New Enhancements...

### Donut

Typical donut covered with icing.



Donut

## Water Bottle w Necker

As titled, a simple water bottle with a Necker tag hanging on it.



Water Bottle w  
Necker

# m-FURNITURE

New Enhancements for 2025

Released Date: 06.25.2024

Version: 2025

Application(s): IRONCAD, INOVATE

Introducing our latest product update, packed with exciting new features and enhancements designed to elevate your experience. We've listened to your feedback and have incorporated improvements that streamline functionality, boost efficiency, and enhance usability. From enhanced user interfaces to advanced customization options, this update is tailored to empower you in achieving your goals more effectively. Join us as we unveil a new chapter of innovation, delivering a product that's more intuitive, powerful, and versatile than ever before.

## Contents

Contents.....	1
New Enhancements... ..	1
Metal Peg Board.....	1

## New Enhancements...

### Metal Peg Board

A sheet metal part of a metal peg board from the company Wall Control. Included are webhooks to couple of purchase sites.



Metal Peg Board





# m-GLASSES

New Enhancements for 2025

Released Date: 06.25.2024

Version: 2025

Application(s): IRONCAD, INOVATE

Introducing our latest product update, packed with exciting new features and enhancements designed to elevate your experience. We've listened to your feedback and have incorporated improvements that streamline functionality, boost efficiency, and enhance usability. From enhanced user interfaces to advanced customization options, this update is tailored to empower you in achieving your goals more effectively. Join us as we unveil a new chapter of innovation, delivering a product that's more intuitive, powerful, and versatile than ever before.

## Contents

Contents.....	1
New Enhancements... ..	1
Bottle & Spigot .....	1
Water Bottle w Necker .....	1
Gallon of Water .....	1

## New Enhancements...

### Bottle & Spigot

Spigot stand with a plastic bottle.



Bottle & Spigot

### Water Bottle w Necker

Plastic water bottle with card around the neck.



Water Bottle w  
Necker

### Gallon of Water

A Block shape equal to a gallon of water.



0-TOOLS



Gallon of  
Water

# m-LIQUOR

New Enhancements for 2025

Released Date: 06.25.2024

Version: 2025

Application(s): IRONCAD, INOVATE

Introducing our latest product update, packed with exciting new features and enhancements designed to elevate your experience. We've listened to your feedback and have incorporated improvements that streamline functionality, boost efficiency, and enhance usability. From enhanced user interfaces to advanced customization options, this update is tailored to empower you in achieving your goals more effectively. Join us as we unveil a new chapter of innovation, delivering a product that's more intuitive, powerful, and versatile than ever before.

## Contents

Contents.....	1
New Enhancements... ..	1
Fever Tree Tonic Bottle 50cl .....	1
Grey Goose 750ml w Necker.....	1
Grey Goose 750ml.....	1
Makers Mark.....	2

## New Enhancements...

### Fever Tree Tonic Bottle 50cl



Fever Tree Tonic  
Bottle 50cl

### Grey Goose 750ml w Necker



Grey Goose  
750ml w Necker

### Grey Goose 750ml



Grey Goose  
750ml

# Makers Mark



Makers Mark

# m-LOGOS

New Enhancements for 2025

Released Date: 06.25.2024

Version: 2025

Application(s): IRONCAD, INOVATE

Introducing our latest product update, packed with exciting new features and enhancements designed to elevate your experience. We've listened to your feedback and have incorporated improvements that streamline functionality, boost efficiency, and enhance usability. From enhanced user interfaces to advanced customization options, this update is tailored to empower you in achieving your goals more effectively. Join us as we unveil a new chapter of innovation, delivering a product that's more intuitive, powerful, and versatile than ever before.

## Contents

Contents.....	1
New Enhancements... ..	1
MAC.....	1
EL & Estee Lauder.....	1
The Balvenie.....	1
Glenfiddich.....	2

## New Enhancements...

### MAC

Cosmetic line of products from MAC.



### EL & Estee Lauder

Both the Estee Lauder signature and the EL icon.



### The Balvenie

Common Whiskey

THE BALVENIE

The Balvenie

# THE BALVENIE

Glenfiddich

Common Whiskey

Glenfiddich

Glenfiddich

# Glenfiddich

# m-LUMBER

New Enhancements for 2025

Released Date: 06.25.2024

Version: 2025

Application(s): IRONCAD, INOVATE

Introducing our latest product update, packed with exciting new features and enhancements designed to elevate your experience. We've listened to your feedback and have incorporated improvements that streamline functionality, boost efficiency, and enhance usability. From enhanced user interfaces to advanced customization options, this update is tailored to empower you in achieving your goals more effectively. Join us as we unveil a new chapter of innovation, delivering a product that's more intuitive, powerful, and versatile than ever before.

## Contents

Contents.....	1
General Announcements.....	1
New Enhancements.....	1
Window Trim.....	1
ZMAX Rafter Tie .....	2
Curb.....	2
4x4 Post Top 001 .....	2
Plywood Edge 001 and Plywood Edge 002 .....	2
Shelf Free (Updated) .....	2
Shelf (Updated) .....	2
Plywood; Pine_4' x 8' (Updated).....	3
UPDATED: Nail On Foot_Hyderon .....	3

## General Announcements...

- Renamed sub-group "Door Trim" to "Trim"

## New Enhancements...

### Window Trim

Structured Part of Window molding frame. Operates the same as the door trim. Video in Folder.



Trim



Window Trim

## ZMAX Rafter Tie

Sheet metal part of a ZMAX Rafter Tie. Hole locations may not be accurate but provide a visual cue. Web hook has been added to open vendor site.



Zmax Rafter Tie

## Curb

Simple model of a temporary curb.



Curb

## 4x4 Post Top 001

Basic top of 4 x4 post adornment. Simply drag onto the center point of 4x4 top face. This drops the required Intellishapes for editing if desired.

Alternately also included is a BREP version that allows for faster speed thru the combination of Intellishapes. This version also is used if you do not wish to make any post modifications and ensures proper placement.



4x4 Post Top 001



4x4 Post Top 001B

## Plywood Edge 001 and Plywood Edge 002

Textures of plywood edging both light and dark.

Texture files: XXXXXXXXXXXX\M-LUMBER\Mag-LUMBER\_Bin\Textures\Layer001.jpg and Layer002.jpg



Plywood Edge 001



Plywood Edge 002

## Shelf Free (Updated)

Added a 1/8", 5/16", and 7/16" thick variations along with dimensional previews. Updated icon.



Shelf Free



Shelf Free

Old:                      New:

## Shelf (Updated)

Added a 1/8", 5/16", and 7/16" thick variations along with dimensional previews. Updated icon.



Shelf



Shelf

Old:                      New:

## Plywood; Pine\_4' x 8' (Updated)

Added a 1/8", 5/16", and 7/16" thick variations along with dimensional previews. Updated icon.



Plywood;  
Pine\_4' x 8'

## UPDATED: Nail On Foot\_Hyderon

Remodeled to new product specs and added part numbers 120125 and 120126. Updated to URL to new product page and updated the preview images.



Nail On  
Foot\_Hyderon



# m-MECHANISM

New Enhancements for 2025

Released Date: 06.25.2024

Version: 2025

Application(s): IRONCAD, INOVATE

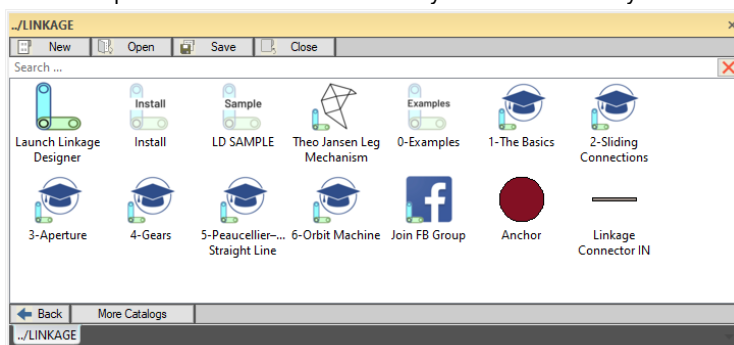
Introducing our latest product update, packed with exciting new features and enhancements designed to elevate your experience. We've listened to your feedback and have incorporated improvements that streamline functionality, boost efficiency, and enhance usability. From enhanced user interfaces to advanced customization options, this update is tailored to empower you in achieving your goals more effectively. Join us as we unveil a new chapter of innovation, delivering a product that's more intuitive, powerful, and versatile than ever before.

## Contents

Contents.....	1
General Announcements.....	1
New Enhancements.....	1
Join FB Group .....	1

## General Announcements...

- Updated icons for more clarity and user friendly.

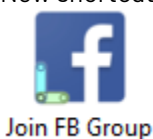


- If you have installed Linkage recently, make sure to check the launch icon is set to the proper executable location. Default install is C:\Program Files\Linkage\Linkage.exe, however double check if you custom installed.

## New Enhancements...

### Join FB Group

New shortcut to the Linkage Facebook group.



# m-OFFICE

New Enhancements for 2025

Released Date: 06.25.2024

Version: 2025

Application(s): IRONCAD, INOVATE

Introducing our latest product update, packed with exciting new features and enhancements designed to elevate your experience. We've listened to your feedback and have incorporated improvements that streamline functionality, boost efficiency, and enhance usability. From enhanced user interfaces to advanced customization options, this update is tailored to empower you in achieving your goals more effectively. Join us as we unveil a new chapter of innovation, delivering a product that's more intuitive, powerful, and versatile than ever before.

## Contents

Contents .....	1
New Enhancements... .....	1
Magazine Rack .....	1
Chair Task .....	1

## New Enhancements...

### Magazine Rack

Custom designed magazine rack.



Magazine Rack

### Chair Task

Custom task chair.



Chair Task

# m-RACKS

New Enhancements for 2025

Released Date: 06.25.2024

Version: 2025

Application(s): IRONCAD, INOVATE

Introducing our latest product update, packed with exciting new features and enhancements designed to elevate your experience. We've listened to your feedback and have incorporated improvements that streamline functionality, boost efficiency, and enhance usability. From enhanced user interfaces to advanced customization options, this update is tailored to empower you in achieving your goals more effectively. Join us as we unveil a new chapter of innovation, delivering a product that's more intuitive, powerful, and versatile than ever before.

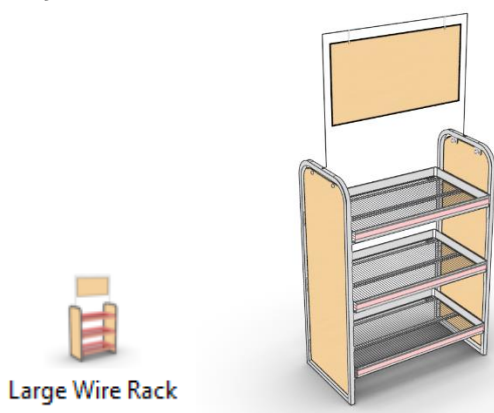
## Contents

Contents.....	1
New Enhancements... ..	1
Large Wire Rack.....	1
Lowes Rack.....	2
Slimline Gravity .....	2
Wooden Wine Rack.....	2
PFI Wire Rack .....	3
PFI Slimline 2.....	3
PFI Cardboard Surround.....	3

## New Enhancements...

### Large Wire Rack

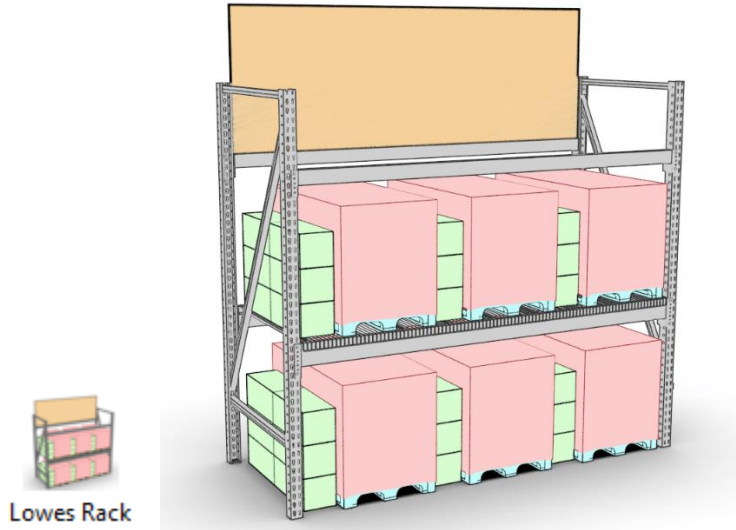
Large metal rack made from meta, wire, and sheet metal.



Large Wire Rack

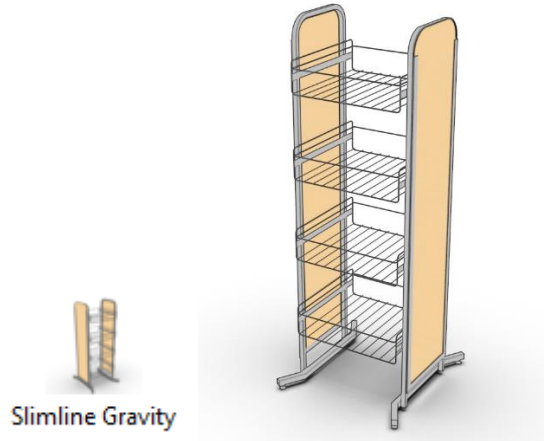
## Lowes Rack

Industrial strength large box store storage shelves.



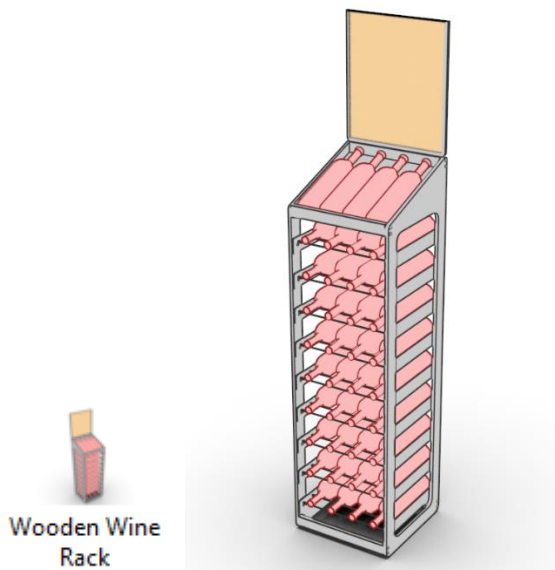
## Slimline Gravity

Common retail wire rack. Webhook to supplier page.



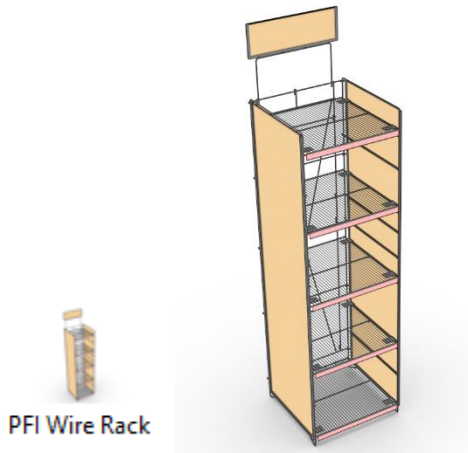
## Wooden Wine Rack

Common retail wine rack.



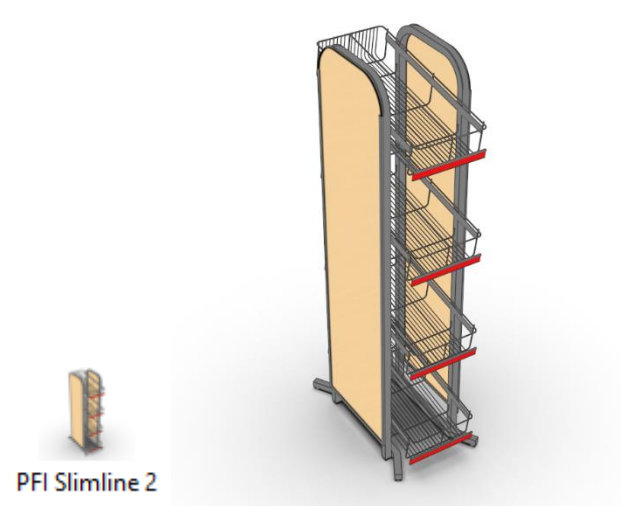
## PFI Wire Rack

Common retail merchandise rack mostly wireframe construction.



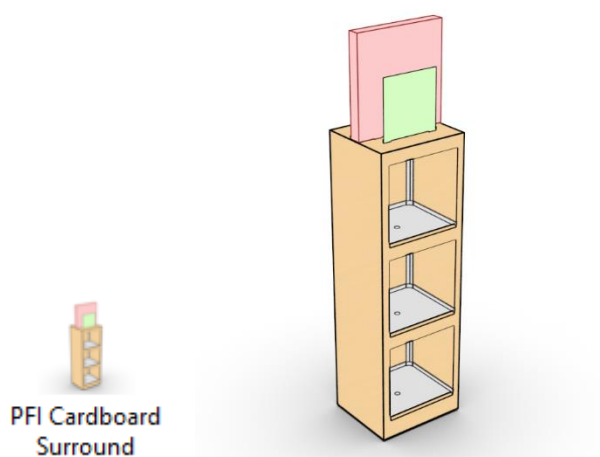
## PFI Slimline 2

Common retail merchandise rack mostly wireframe construction.



## PFI Cardboard Surround

Common retail merchandise rack made of plastic and cardboard.



# m-RESOURCES

New Enhancements for 2025

Released Date: 06.25.2024

Version: 2025

Application(s): IRONCAD, INOVATE

Introducing our latest product update, packed with exciting new features and enhancements designed to elevate your experience. We've listened to your feedback and have incorporated improvements that streamline functionality, boost efficiency, and enhance usability. From enhanced user interfaces to advanced customization options, this update is tailored to empower you in achieving your goals more effectively. Join us as we unveil a new chapter of innovation, delivering a product that's more intuitive, powerful, and versatile than ever before.

## Contents

Contents.....	1
General Announcements.....	1
New Enhancements... ..	1
Mag-Libs (Updated).....	1
Mag-Libs Shop.....	2

## General Announcements...

- Removed Mag-ESTIMATOR sub-group. We decided to leave this as its own standalone catalog that can be downloaded from Magna-Catalogs site.
- Magna-Catalogs (Mag-Libs): Are now called "Mag-Libs". Fixed the URL for "Mag-Libs" and updated icon. This goes to the exclusive downloads site for Active Magnacad Customers on Armor Advantage of Subscription Service only.
- Facebook: Fixed the URL for our Facebook page.
- Twitter: Updated icon to "X" to reflect the formerly known as Twitter icon.
- Magnacad Blog: Fixed the URL
- KeyShot: Fixed the URL
- Support Contracts: Removed
- Colorized important support tools so they are more prominent. These are the tools used when Magnacad provides and delivers support, so it's important to use these when you have an issue.



Join Session



Email Support



FAQ



Email Large Files

## New Enhancements...

### Mag-Libs (Updated)

Magna-Catalogs are now called "Mag-Libs" (short for Libraries). So, we updated the icon.



Mag-Libs

## Mag-Libs Shop

This new shop link is for non-Magnacad customers or expired Magnacad customers not on an active IronCAD support plan, and wish to purchase Mag-Libs as needed.



[Mag-Libs Shop](#)

# m-SENIORS

New Enhancements for 2025

Released Date: 06.25.2024

Version: 2025

Application(s): IRONCAD, INOVATE

Introducing our latest product update, packed with exciting new features and enhancements designed to elevate your experience. We've listened to your feedback and have incorporated improvements that streamline functionality, boost efficiency, and enhance usability. From enhanced user interfaces to advanced customization options, this update is tailored to empower you in achieving your goals more effectively. Join us as we unveil a new chapter of innovation, delivering a product that's more intuitive, powerful, and versatile than ever before.

## Contents

Contents.....	1
General Announcements.....	1
New Enhancements.....	1
Toilet Support Rails .....	1

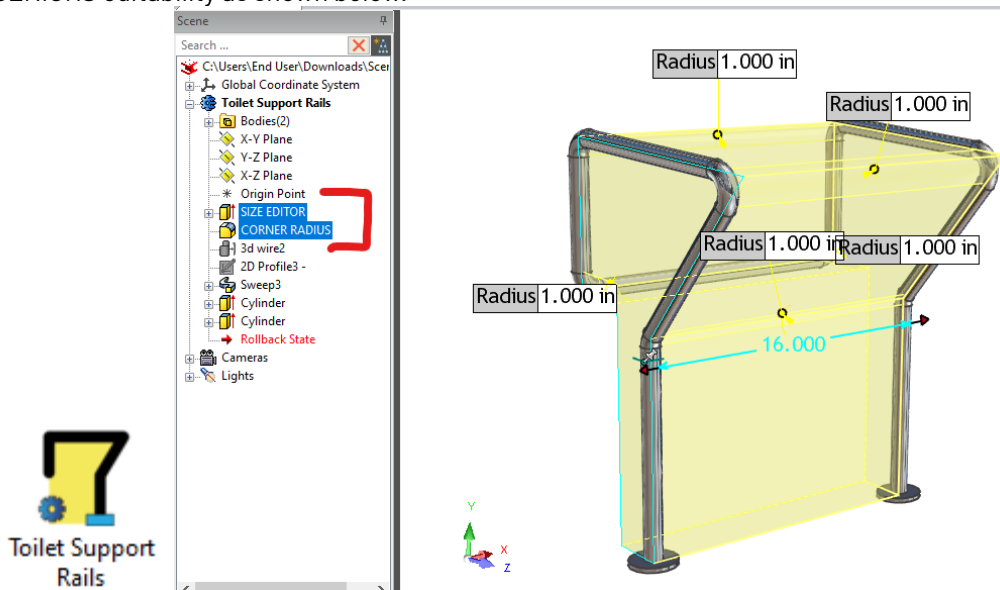
## General Announcements...

- Removed the "0-Show-Me's" sub-group. All videos are found the video of the catalogs bin.

## New Enhancements...

### Toilet Support Rails

Structured model of common Toilet Support Rails that mount to a toilet bowl. Use the standard procedures for Mag-SENIORS editability as shown below.





# m-SHAPES

New Enhancements for 2025

Released Date: 06.25.2024

Version: 2025

Application(s): IRONCAD, INOVATE

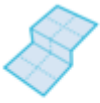
Introducing our latest product update, packed with exciting new features and enhancements designed to elevate your experience. We've listened to your feedback and have incorporated improvements that streamline functionality, boost efficiency, and enhance usability. From enhanced user interfaces to advanced customization options, this update is tailored to empower you in achieving your goals more effectively. Join us as we unveil a new chapter of innovation, delivering a product that's more intuitive, powerful, and versatile than ever before.

## Contents

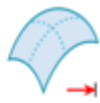
Contents.....	1
General Announcements.....	2
Surf Zee & Loft-3 Arc .....	2
3D Point.....	2
New Enhancements.....	2
Clearance Hole Chart .....	2
Subtractive Intellishapes.....	2
ANSI_C'Sink Hole (Updated) .....	2
Pocket (Updated) .....	2
Hanger Notch .....	3
SymCut .....	3
Tap Drill Hole .....	3
Clearance Hole .....	4
Additive IntelliShapes.....	4
UPC Track .....	4
Edge Protector.....	5
Pull Tab .....	5
Arc .....	5
Decorative IntelliShapes.....	6
Goose .....	6
Surface Intellishapes .....	6
Curved Plane.....	6

## General Announcements...

### Surf Zee & Loft-3 Arc



Surf Zee



Loft-3 Arc

Added correct part names and textures to the below components.

### 3D Point



3D Point

Reduced overall size to .063" on whiskers.

## New Enhancements...

### Clearance Hole Chart

A web link to chart that provides the Normal, Close, and Loose fit clearance holes based on thread data. Clearance hole chart for inch bolts and screws according to ASME B18.2.8



Clearance Hole Chart

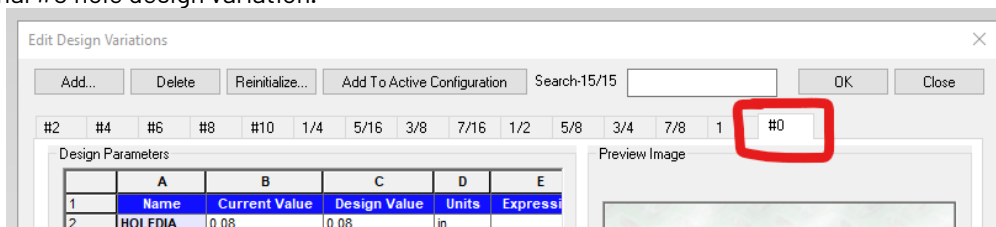
## Subtractive Intellishapes

### ANSI\_C'Sink Hole (Updated)

Added additional #0 hole design variation.

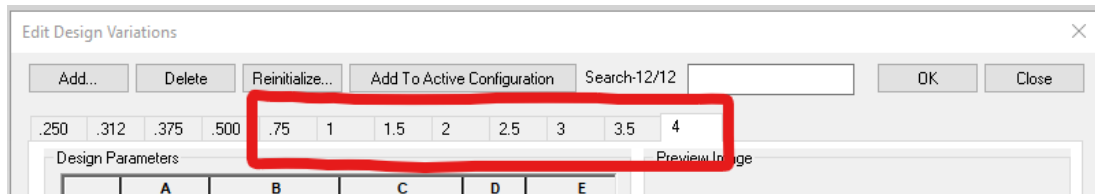


ANSI\_C'Sink Hole



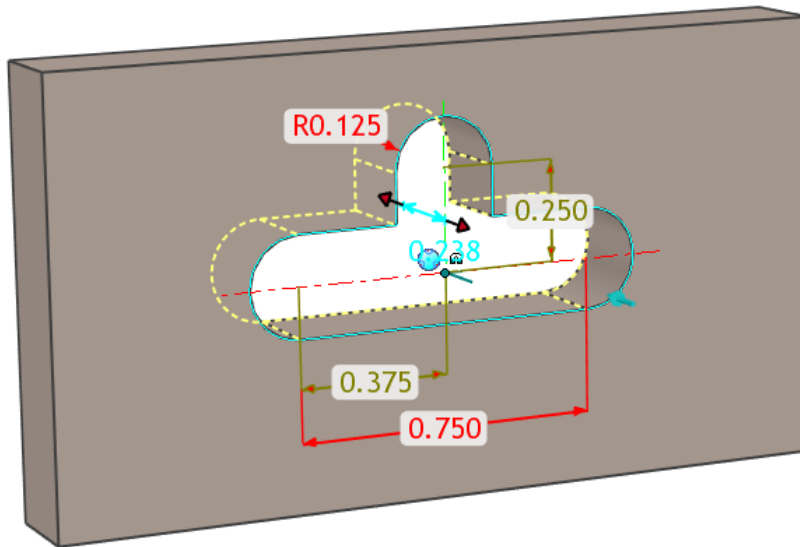
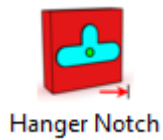
### Pocket (Updated)

Added additional radii variations from .75 thru 4 inch.



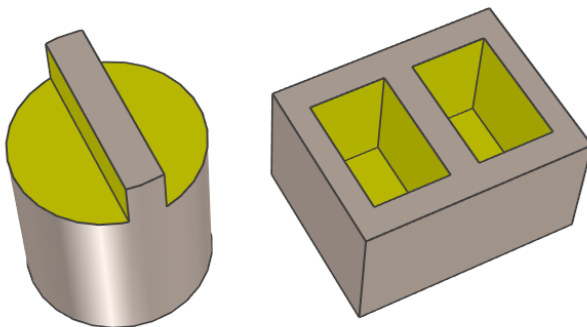
## Hanger Notch

A subtractive feature of a common punch shape used on packaged items to hang on a peg. This is a direct dimension driven Intellishape. So edit the profile dimensions to update as required. This can be used on solid models as well as sheet metal models.



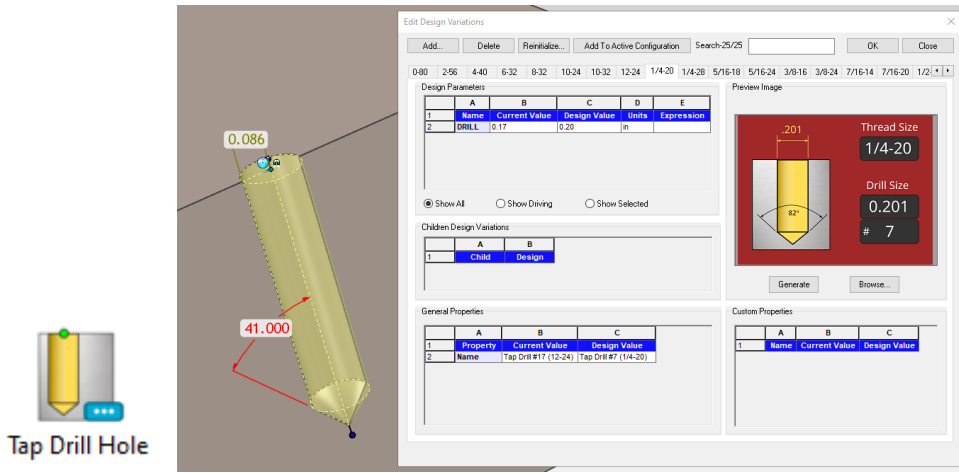
## SymCut

A subtractive Intellishape that allows you to cut a part with symmetrical rectangles. Ideal for adding flats to a cylinder or dual pockets. The uses are endless. Video in folder. Examples below.



## Tap Drill Hole

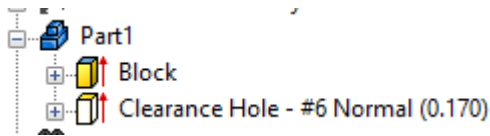
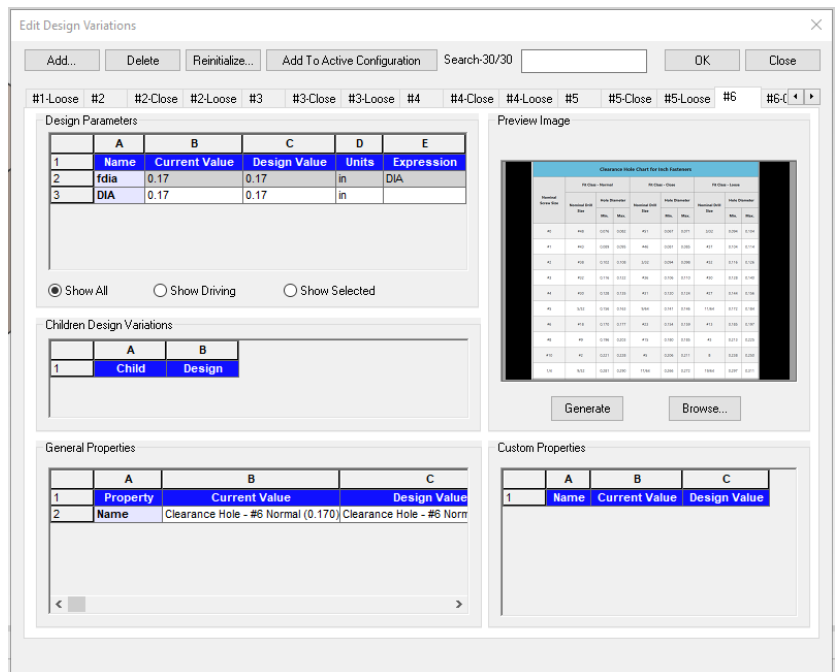
A subtractive variant feature that generates a hole with 82 degree tip to the specified tap drill size for a selected thread. Tap Drill holes range from 0-80 to 1-12 threads in the most common sizes. You can pull the height handle to resize the depth of the hole to the very tip of hole.



## Clearance Hole

A subtractive variant hole of common clearance hole sizes. Normal fit, Close fit and Loose fit clearances are available from sizes #0 thru 1/4". The user name callouts the minimum hole sizes for each fit.

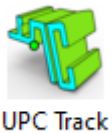
You can adjust according to the preview window (click on preview window it to enlarge) if desired. Or use the new weblink "Clearance Hole Chart" for the entire chart.



## Additive IntelliShapes

### UPC Track

Additive shape of common UPC/SKU track with living hinge design. Use as an IntelliShape or Standalone part.



## Edge Protector

Additive shape profile of a common edge protector extrusion. Use as an IntelliShape or Standalone part.



Edge Protector

## Pull Tab

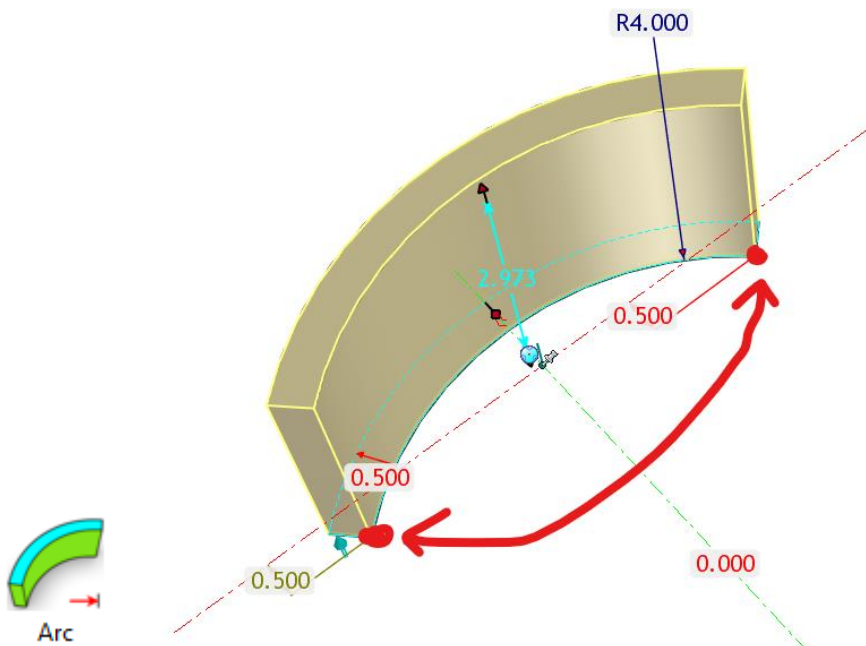
Additive shape profile to mimic the fabric pull tags found on some apparel.



Pull Tab

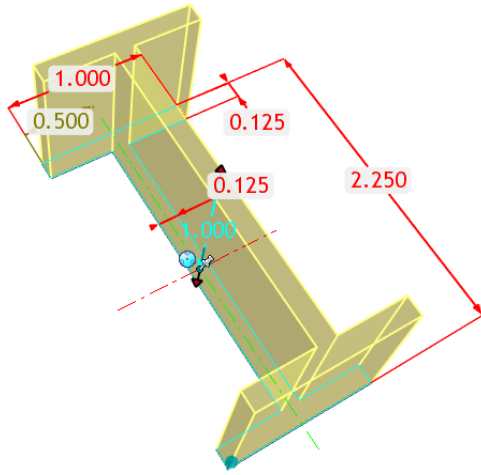
## Arc

Additive shape of a thick arc that can be adjusted by entering cross section and pulling on bottom corners and editing necessary dimensions.



## H-Beam

Additive shape of H-Beam or I-Beam that uses direct dimension editability.



## Decorative IntelliShapes

### Goose

A simple profile of a flying goose.



Goose

## Surface Intellishapes

### Curved Plane

A simple arc surface.



Curved Plane

# m-SHRUBS

New Enhancements for 2025

Released Date: 06.25.2024

Version: 2025

Application(s): IRONCAD, INOVATE

Introducing our latest product update, packed with exciting new features and enhancements designed to elevate your experience. We've listened to your feedback and have incorporated improvements that streamline functionality, boost efficiency, and enhance usability. From enhanced user interfaces to advanced customization options, this update is tailored to empower you in achieving your goals more effectively. Join us as we unveil a new chapter of innovation, delivering a product that's more intuitive, powerful, and versatile than ever before.

## Contents

Contents.....	1
New Enhancements... ..	1
IMPATIENS_002L .....	1
BLUEBERRY_001.....	1
RASPBERRY_001.....	1
STRAWBERRY_001 .....	2
TOMATO_001 .....	2
Hay Bale .....	2

## New Enhancements...

### IMPATIENS\_002L

Long bush of impatiens flowers.



IMPATIENS\_002L

### BLUEBERRY\_001

Nice AI generated blueberry bush.



BLUEBERRY\_001

### RASPBERRY\_001

Nice AI generated raspberry bush.



RASPBERRY\_001

## STRAWBERRY\_001

Nice AI generated strawberry bush.



STRAWBERRY...

## TOMATO\_001

Nice AI generated tomato plant.



TOMATO\_001

## Hay Bale



Hay Bale



# m-SYMBOLS

New Enhancements for 2025

Released Date: 06.25.2024

Version: 2025

Application(s): IRONCAD, INOVATE

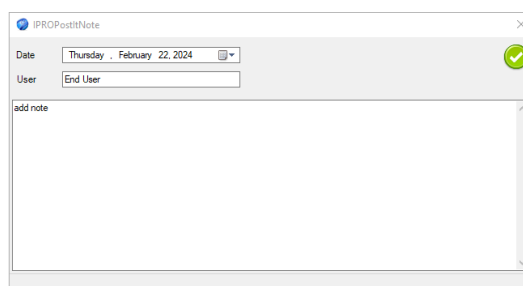
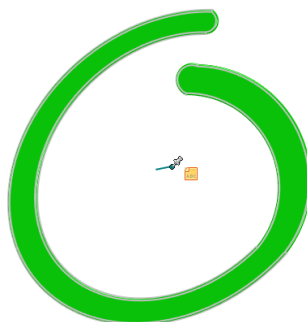
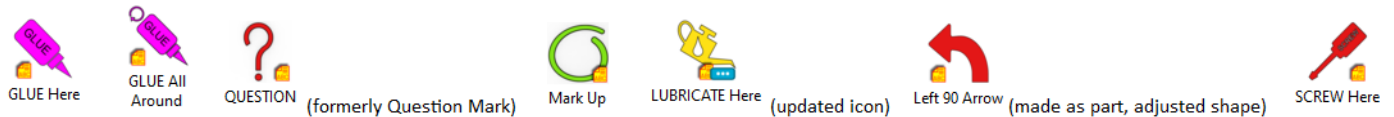
Introducing our latest product update, packed with exciting new features and enhancements designed to elevate your experience. We've listened to your feedback and have incorporated improvements that streamline functionality, boost efficiency, and enhance usability. From enhanced user interfaces to advanced customization options, this update is tailored to empower you in achieving your goals more effectively. Join us as we unveil a new chapter of innovation, delivering a product that's more intuitive, powerful, and versatile than ever before.

## Contents

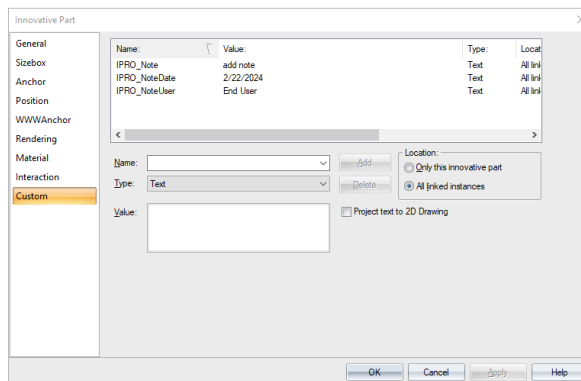
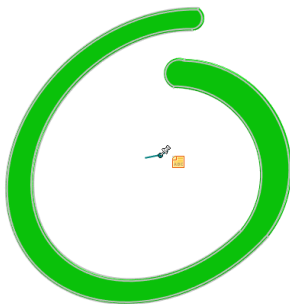
Contents.....	1
New Enhancements.....	1
Non IronCAD-Mechanical Users:.....	2

## New Enhancements...

- **Added the "Post-It Note" option** to the following components as indicated by the yellow post it in icons. The IronCAD-Mechanical "Post-It Note" allows you to edit the notes to add any useful information you wish to convey. If you do not have IronCAD-Mechanical, any notes are added to the Custom Properties of the component



## Non IronCAD-Mechanical Users:



# m-TEXS

New Enhancements for 2025

Released Date: 06.25.2024

Version: 2025

Application(s): IRONCAD, INOVATE

Introducing our latest product update, packed with exciting new features and enhancements designed to elevate your experience. We've listened to your feedback and have incorporated improvements that streamline functionality, boost efficiency, and enhance usability. From enhanced user interfaces to advanced customization options, this update is tailored to empower you in achieving your goals more effectively. Join us as we unveil a new chapter of innovation, delivering a product that's more intuitive, powerful, and versatile than ever before.

## Contents

Contents.....	1
New Enhancements... ..	1
Poly Haven (Updated) .....	1
ARTX .....	1
Chain Link Fence.....	2
Grass_001.....	2
Styrofoam.....	2
Rope_001 .....	2

## New Enhancements...

### Poly Haven (Updated)

Formerly Texture Haven. Update the URL and icon. Poly Haven offers free HDRIs, Textures, Models and more.



### ARTX

Hyperlink to free texture site. Also create your own textures on this site.



## Chain Link Fence

Transparency common chain link fence texture.



Chain Link  
Fence

## Grass\_001

Seamless texture of manicured grass.



Grass\_001

## Styrofoam

Manmade texture



Styrofoam

## Rope\_001

Rough hemp style rope.



Rope\_001

# m-TITLE

New Enhancements for 2025

Released Date: 06.25.2024

Version: 2025

Application(s): IRONCAD

Introducing our latest product update, packed with exciting new features and enhancements designed to elevate your experience. We've listened to your feedback and have incorporated improvements that streamline functionality, boost efficiency, and enhance usability. From enhanced user interfaces to advanced customization options, this update is tailored to empower you in achieving your goals more effectively. Join us as we unveil a new chapter of innovation, delivering a product that's more intuitive, powerful, and versatile than ever before.

## Contents

Contents.....	1
General Announcements.....	1
New Enhancements.....	1
B-001.....	1
B-002.....	1
B-AP-001.icd.....	2

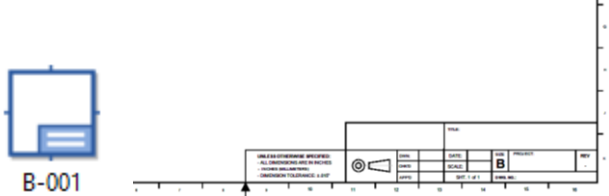
## General Announcements...

- Renamed the following to follow new convention (B-00X) as well as update to new common icon: TEMPLATE-B1, TEMPLATE-B2, TEMPLATE-C1, TEMPLATE-C2

## New Enhancements...

### B-001

Standard common title block used for machined parts.



### B-002

Standard common title block used for machined parts.



# B-AP-001.icd

This is a full auto-populating "B" size drawing template file. You can add it to your Drawing Templates folder and edit to suit.

The image shows a drawing template title block with five callouts (1-5) pointing to specific fields. Callout 1 points to a disclaimer note. Callout 2 points to the TITLE field, which contains the text "\$PRPPart:"IC-PartName"". Callout 3 points to the P/N field, which contains the text "\$PRPPart:"IC-Part Number"". Callout 4 points to the SCALE field, which is currently empty. Callout 5 points to the DWG.NO. field, which contains the text "B-AP-001.icd". The title block also includes a DATE field with the value "3/7/2024 7:39 PM", a SHEET field with the value "1 of 1", and a SHEET SIZE field with the value "11 x 17". The REV. field contains the value "0".

**1** You can enter the desired name or company name in the disclaimer note.

**2** The Title auto-populates with the PartName of the 3D model used from the scene.

**3** The P/N auto-populates with the PartNumber of the 3D model used from the scene.

**4** The Scale is auto-populated based on the scale of the Front View. If you change the scale of view, you will need to update the Titleblock using the IronCAD-Mechanical add-on in the menu.

**5** The Dwg.No is auto-poulated by the Filename of the drawing.

# m-TOOLS

New Enhancements for 2025

Released Date: 06.25.2024

Version: 2025

Application(s): IRONCAD, INOVATE

Introducing our latest product update, packed with exciting new features and enhancements designed to elevate your experience. We've listened to your feedback and have incorporated improvements that streamline functionality, boost efficiency, and enhance usability. From enhanced user interfaces to advanced customization options, this update is tailored to empower you in achieving your goals more effectively. Join us as we unveil a new chapter of innovation, delivering a product that's more intuitive, powerful, and versatile than ever before.

## Contents

Contents.....	1
General Announcements.....	2
New Enhancements.....	2
TS10-10 Squares (Updated) .....	2
CAD Files .....	2
Drill Size Chart .....	2
Math Calculators .....	3
Hairpin Cotter Pin.....	3
Flat L bracket .....	3
Leveling Mount .....	3
Suction Cup .....	3
Pegboard Hook.....	4
Perchance.....	4
Crayon .....	4
Runway.....	5
ElevenLabs.....	5
Window Trim.....	5
SYNGERY Configurator .....	5
Sculpting.....	5
Corner Extrusion .....	5
Quick Frame 9000 .....	6
QF 2-Way Corner Connector .....	6
QF 3-Way Tee Connector.....	6
QF 3-Way Corner Connector .....	7
QF 4-Way Corner Connector .....	7
QF 90D Corner Base Connector .....	8

Quick Frame 9000 .....	8
Steel Box_SQ BAR 001.....	8
Steel Box_SQ TUBE 001.....	9
S Hook .....	9
Custom Structured Frames... ..	9
QUICKFRAME; QF9000.....	10
MAG2023; Square Bar.....	10
T-SLOT ; TS10-10 BiSlotOpp_SQ .....	10
T-SLOT ; TS10-10 BiSlot Ad_SQ.....	11
T-SLOT ; TS10-10 TriSlot_SQ .....	11

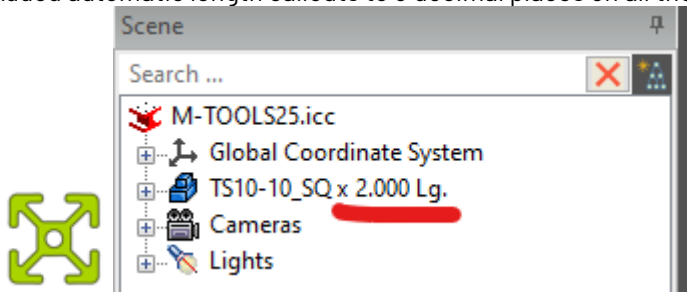
## General Announcements...

Added the missing T-SLOT structural profile data. - Installation is required to gain access to these custom frames. Make sure to make a backup copy of the folder "CustomStructuredFrame" before overwriting as outlined below. Simply unzip the files supplied in "CustomStructuredFrame.zip" into the following directory and overwrite the current "CustomStructuredFrame" folder C:\Users\End User\AppData\Local\IronCAD\IRONCAD\26.0\en-us

## New Enhancements...

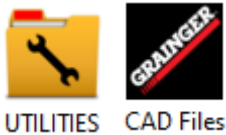
### TS10-10 Squares (Updated)

Added automatic length callouts to 3 decimal places on all the TS101-10 squares.



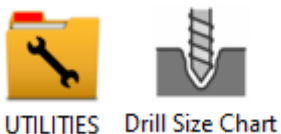
### CAD Files

Supplier Grainger product line with CAD files URL hook.



### Drill Size Chart

Online chart for drill sizes along with tap sizes and more.





## Math Calculators

Link to various online calculators for math and science.



UTILITIES



Math  
Calculators

## Hairpin Cotter Pin

Simple R-clip



HARDWARE



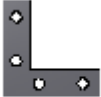
Hairpin Cotter  
Pin

## Flat L bracket

Simple L bracket with a webhook assigned to open web page of product.



HARDWARE



Flat L Bracket

## Leveling Mount

Leveling Mount with webhook to supplier site.



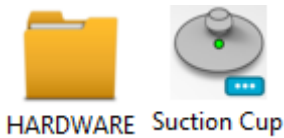
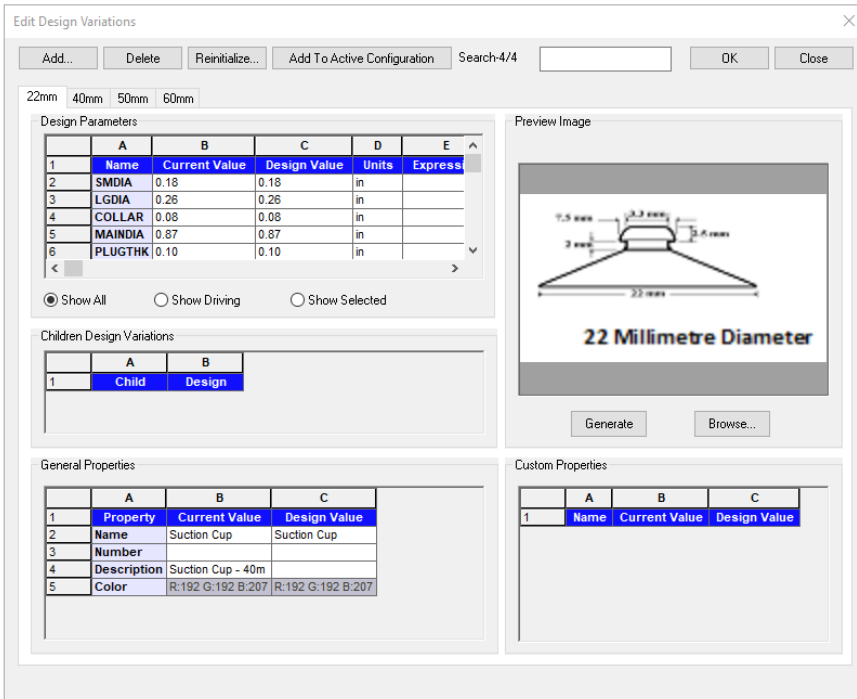
HARDWARE



Leveling Mount

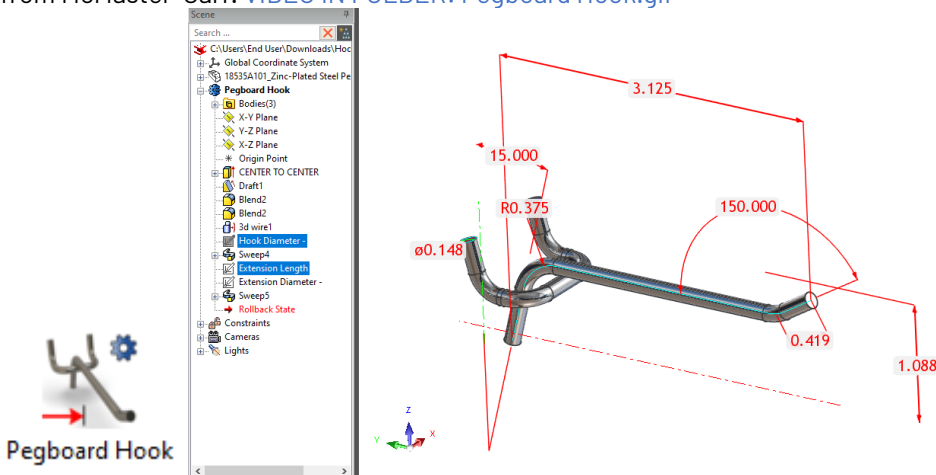
## Suction Cup

a design variant model of a common suction cup in various sizes.



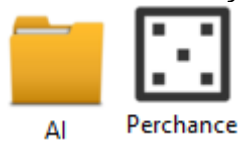
## Pegboard Hook

A structured part with direct dimension drivers to modify the hook as desired to match the included webhook specifications from McMaster-Carr. [VIDEO IN FOLDER: Pegboard Hook.gif](#)



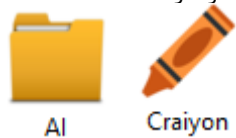
## Perchance

Free AI Text-to-Image generator.



## Craiyon

AI Text-to-Image generator.



## Runway

AI Text-to-Video generator. Realistically and consistently synthesize new videos with nothing but text. It's like filming something new, without filming anything at all.



## ElevenLabs

AI Text-to-Voice generator. Convert text to speech online for free. Create natural AI voices instantly in any language - perfect for video creators, developers, and businesses.



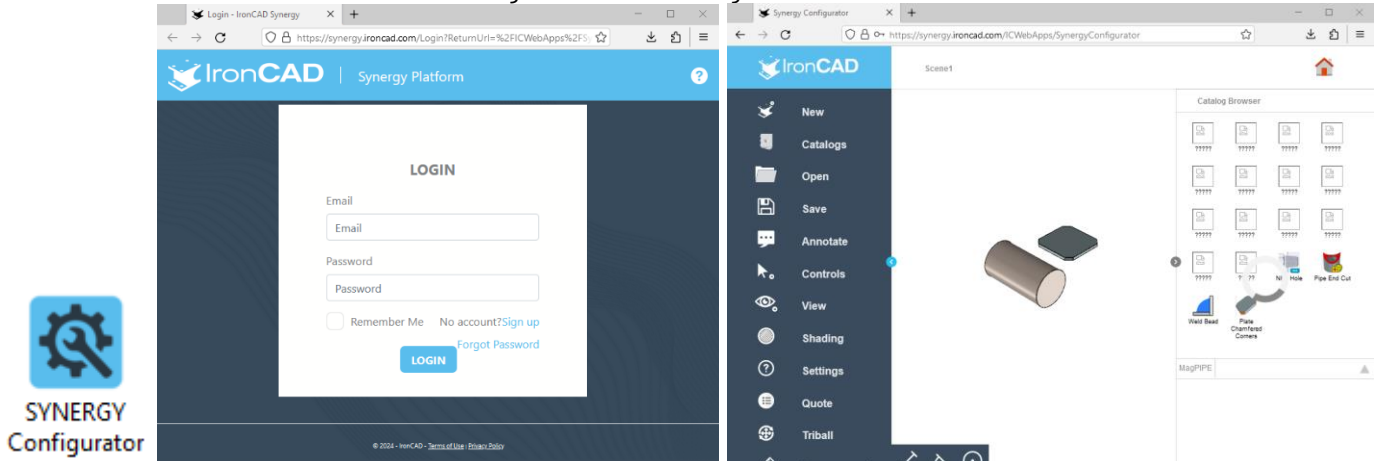
## Window Trim

Structured Part of Window molding frame. Operates the same as the Door Trim.



## SYNERGY Configurator

Web link to the cloud-based SYNERGY Configurator interface login. For licensed SYNERGY users.



## Sculpting

Web link to a free 3d cloud-based sculpting platform to develop organic shapes that can be export in various formats and used in your IronCAD design. **Video:** <https://magnacad.com/wp-content/uploads/Magna-Catalogs/MagSHAPES/Sculpting.mp4>



## Corner Extrusion

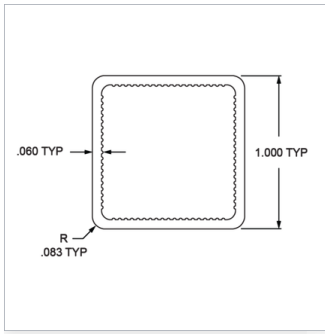
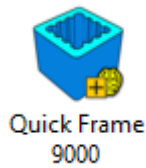
Stock size aluminum corner extrusion with the URL web hook attachment.



Corner Extrusion

## Quick Frame 9000

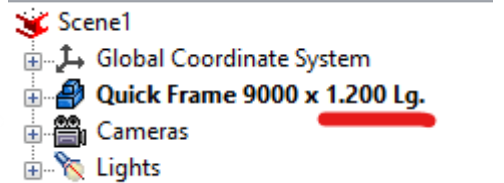
- Part matching the profile of the Quick Frame 9000 aluminum extrusion available from supplier 80/20 inc.
- The proper density has been applied according to 80/20 inc. 0.023 lbs/in.
- A webhook to product site is also attached.
- Automatic length callout via IC-MECH Code Generator
- VIDEO IN FOLDER: QuickFrame 9000.gif



### Part No. 9000

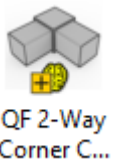
1.00" X 1.00" Square Tube Profile

9000 is a 1.00" x 1.00" square Quick Frame profile with a grooved interior used to hold nylon connectors into place. The profile has a smooth surface for a sleek appearance and allows for easy cleaning, lending itself to applications such as framing, displays, or retail kiosks.



## QF 2-Way Corner Connector

- Downloaded part available from supplier 80/20 inc.
- SmartAssembly attachment points used on Quick Frame 90000
- "Attach TriBall on Drop" preset.
- "Link on Drop" preset (*each time you drop this component into scene it will be linked to any previous instance of this component dropped*)
- The proper density has been applied according to 80/20 inc. 0.065 lbs/in.
- A webhook to product site is also attached.
- VIDEO IN FOLDER: QuickFrame 9000.gif



### Part No. 9120

2 Way - Corner Connector

The 2 way - corner connector is made of nylon and is used with a Quick Frame profile which has built-in ridges that bite into the fastener to create tension without the use of additional hardware. It provides a 90 degree flush connection quickly and easily using only a soft-faced mallet to form light-duty yet sturdy builds. The 2 way - corner connector is commonly used when transitioning between standard and flanged profiles. It requires no additional hardware and no machining services. Connecting flanged Quick Frame profiles at a 90 degree angle requires a 45 degree miter cut to connect without interference.

## QF 3-Way Tee Connector

- Downloaded part available from supplier 80/20 inc.
- SmartAssembly attachment points used on Quick Frame 90000.
- "Attach TriBall on Drop" preset.
- "Link on Drop" preset (*each time you drop this component into scene it will be linked to any previous instance of this component dropped*)
- The proper density has been applied according to 80/20 inc. 0.082 lbs/in.
- A webhook to product site is also attached.
- VIDEO IN FOLDER: QuickFrame 9000.gif



QF 3-Way Tee  
Connector



## Part No. 9130

### 3 Way - Tee Connector

---

The 3 way - tee connector is made of nylon and is used with a Quick Frame profile which has built-in ridges that bite into the fastener to create tension without the use of hardware. It provides flush connections of up to three Quick Frame profiles using only a soft-faced mallet to form light-duty yet sturdy builds. This fastener can connect two profiles end to end with an additional 90 degree connection and is also commonly used when transitioning between standard and flanged profiles. The 3 way - tee connector requires no additional hardware and no machining services. Connecting flanged Quick Frame profiles at a 90 degree angle requires a 45 degree miter cut to connect without interference.

## QF 3-Way Corner Connector

- Downloaded part available from supplier 80/20 inc.
- SmartAssembly attachment points used on Quick Frame 90000.
- "Attach TriBall on Drop" preset.
- "Link on Drop" preset (*each time you drop this component into scene it will be linked to any previous instance of this component dropped*)
- The proper density has been applied according to 80/20 inc. 0.099 lbs/in.
- A webhook to product site is also attached.
- VIDEO IN FOLDER: QuickFrame 9000.gif



QF 3 Way  
Corner C...



## Part No. 9150

### 3 Way - Corner Connector

---

The 3 way - corner connector is made of nylon and is used with a Quick Frame profile which has built-in ridges that bite into the fastener to create tension without the use of additional hardware. It provides flush 90 degree connections of up to three Quick Frame profiles, convenient when you want to branch another profile off of a corner. The 3 way - corner connector is commonly used when transitioning between standard and flanged profiles and uses only a soft-faced mallet to form light-duty yet sturdy builds. It requires no additional hardware or machining services. Connecting flanged Quick Frame profiles at a 90 degree angle requires a 45 degree miter cut to connect without interference.

## QF 4-Way Corner Connector

- Downloaded part available from supplier 80/20 inc.
- SmartAssembly attachment points used on Quick Frame 90000.
- "Attach TriBall on Drop" preset.
- "Link on Drop" preset (*each time you drop this component into scene it will be linked to any previous instance of this component dropped*)

- The proper density has been applied according to 80/20 inc. 0.100 lbs/in.
- A webhook to product site is also attached.
- VIDEO IN FOLDER: QuickFrame 9000.gif



## Part No. 9170

### 4 Way - Corner Connector

The 4 way - corner connector is made of nylon and is used with a Quick Frame profile which has built-in ridges that bite into the fastener to create tension without the use of additional hardware. It provides flush connections of up to four Quick Frame profiles, forming 90 degree or 180 degree connections. The 4 way - corner connector is convenient when you want to branch another profile off of a corner or straight line. The 4-way corner connector is commonly used when transitioning between standard and flanged profiles and uses only a soft-faced mallet to form light-duty yet sturdy builds. It requires no machining services or additional hardware.

## QF 90D Corner Base Connector

- Downloaded part available from supplier 80/20 inc.
- SmartAssembly attachment points used on Quick Frame 90000.
- "Attach TriBall on Drop" preset.
- "Link on Drop" preset (each time you drop this component into scene it will be linked to any previous instance of this component dropped)
- The proper density has been applied according to 80/20 inc. 0.028 lbs/in.
- A webhook to product site is also attached.
- VIDEO IN FOLDER: QuickFrame 9000.gif



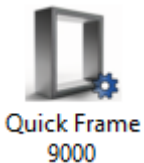
## Part No. 9242

### 90 Degree Corner Base Connector

The 90 degree corner base connector is made of nylon and is used with a Quick Frame profile which has built-in ridges that bite into the fastener to create tension without the use of hardware. It is convenient for projects that will be attached or mounted at a 90 degree angle to any flat surface or T-slot profile and it also provides a corner connection. The 90 degree corner base connector attaches profiles quickly and easily using only a soft-faced mallet to form light-duty yet sturdy builds.

## Quick Frame 9000


Structured Steel Frame which is set by default to use the QF9000 custom structure frame. This is using the **QUICKFRAME** Custom Structured Frame files included in this release.




## Steel Box\_SQ BAR 001

Structured Steel Box Frame using Magnacad's MAG2023 1.0" Square Bar:

▶ **Frame Feature**  
◀ **Frame Member Selection**





**Steel Box\_SQ BAR 001**


Standard: MAG2023  
 Shape: Square Bar  
 Size: 1

## Steel Box\_SQ TUBE 001

Structured Steel Box Frame using Magnacad's MAG2023 1.0" Structural Tubing - Square:

▶ **Frame Feature**  
◀ **Frame Member Selection**

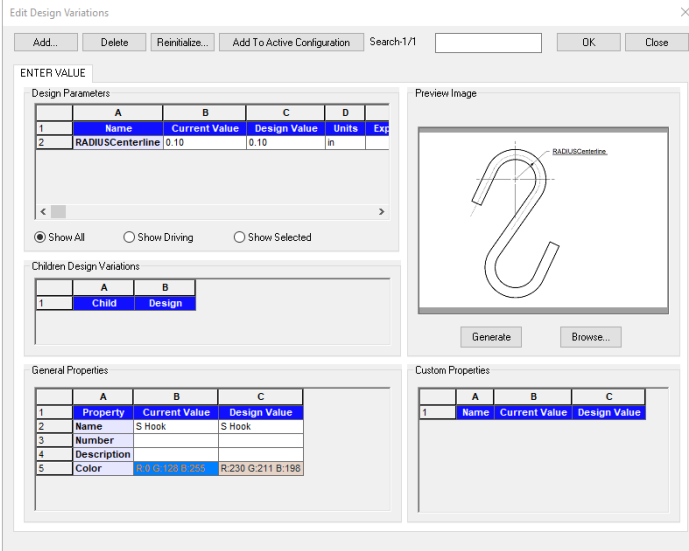



**Steel Box\_SQ TUBE 001**

Standard: MAG2023  
 Shape: Structural Tubing - Square  
 Size: 1.0

## S Hook

A variant model of a common S Hook. You can enter the desired radial centerline dimension of hook via the Design Variation. You also have the ability to edit the dimensions in the profile if desired as well.



**Design Parameters**

1	A	B	C	D	
	Name	Current Value	Design Value	Units	Ext
2	RADIUScenterline	0.10	0.10	in	

**Children Design Variations**

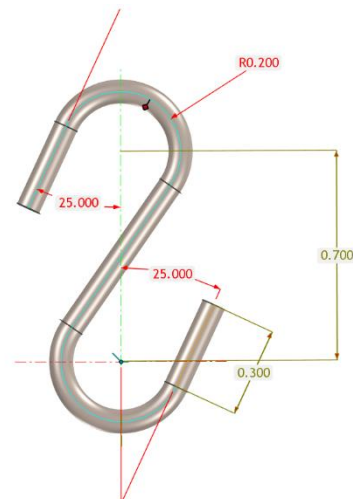
1	A	B
	Child	Design

**General Properties**

1	A	B	C
	Property	Current Value	Design Value
2	Name	S Hook	S Hook
3	Number		
4	Description		
5	Color	R.020 G.211 B.198	R.230 G.211 B.198

**Custom Properties**

1	A	B	C
	Name	Current Value	Design Value



## Custom Structured Frames...

These are used when generated steel structured frames in Structured part mode.

## INSTALLATION.

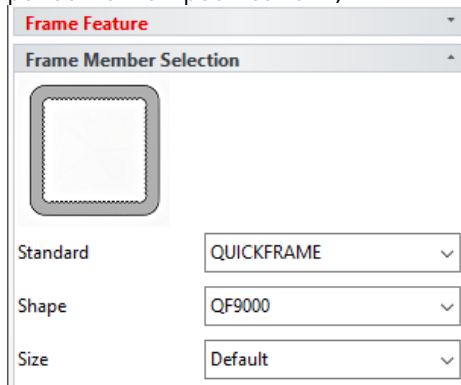
Installation is required to gain access to these custom frames. Make sure to make a backup copy of the folder "CustomStructuredFrame" prior to overwriting as outlined below.

Simply unzip the files supplied in "CustomStructuredFrame.zip" into the following directory and overwrite the current "CustomStructuredFrame" folder:

C:\Users\End User\AppData\Local\IronCAD\IRONCAD\XX.0\en-us

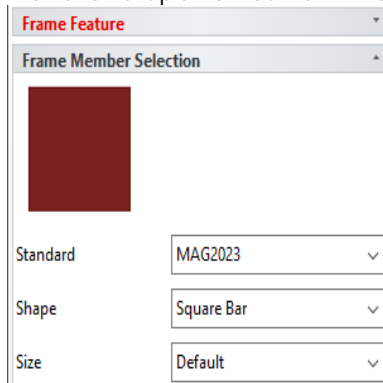
## QUICKFRAME; QF9000

We have setup a new custom structured frame "QUICKFRAME" category with one default size shape "QF9000" (1" square as per 80/20 inc. specifications).



## MAG2023; Square Bar

We have setup a new custom structured frame "Square Bar" category with sizes ranging from 0.125" to 6.000".




## T-SLOT ; TS10-10 BiSlotOpp\_SQ

We have added new custom structured frame to the "T-SLOT" category with one default size shape of 1" square.



**Frame Feature** ▾

**Frame Member Selection** ▲



Standard  ▾

Shape  ▾


Size  ▾

## T-SLOT ; TS10-10 BiSlot Ad\_SQ

We have added new custom structured frame to the "T-SLOT" category with one default size shape of 1" square.

**Frame Feature** ▾

**Frame Member Selection** ▲



Standard  ▾

Shape  ▾


Size  ▾

## T-SLOT ; TS10-10 TriSlot\_SQ

We have added new custom structured frame to the "T-SLOT" category with one default size shape of 1" square.

**Frame Feature** ▾

**Frame Member Selection** ▲



Standard  ▾

Shape  ▾

Size  ▾